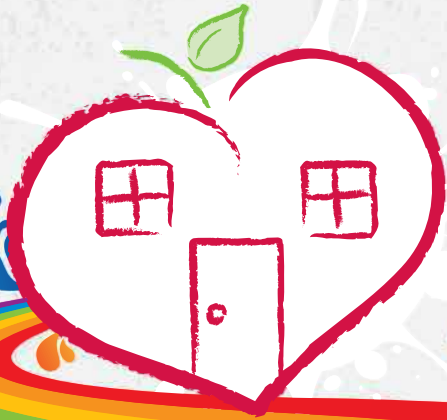


# Our Neighborhood Homework House

Serving the children of Azusa since 1997



Homework House is a place where children will consistently experience love and encouragement, as they receive the help they need to succeed in school and to make positive choices for their lives.

2010-2011  
**ANNUAL  
REPORT**

# MISSION

Our mission is to establish and sustain neighborhood based learning centers in Azusa where at-risk children and their families are equipped to thrive academically, socially, and spiritually. We provide safe, welcoming environments for children receive individualized tutoring and mentoring. The staff and tutors build lasting friendships with the neighborhood children and their families.



## Dear Friends,

What a year for Homework House! As we offer programming to our families ten out of the twelve months, we provide valuable educational tools to our families and their students. We were pleased this year to serve 95 families.

### Here are some facts about our students and their families:

- 99% of our families self-identify as having Spanish as their home language.
- Less than 1% of our parents identify as having a high school diploma or higher
- 85% of the families we serve in Azusa are at or below the poverty level with a family size (5) is larger than the average size of families in Azusa.
- This year almost 200 students in grades K-12, representing all junior and senior high schools in the Azusa Unified District as well as seven of the K-5 schools. Further, some of the Azusa students are attending schools out of the district and we served those students as well.
- In the survey, 100% of parents agreed that 'The events at HH help me feel like a part of the community.'
- Nearly 300 volunteers joined the work of Homework House, including parents, college students and members of the community, while thousands of dollars in in-kind donations have kept our program running.

This annual report will contain numbers, facts and figures. What cannot be expressed enough is the tremendous social impact of Homework House on our community. We have heard from parents, teachers, students and volunteers as to their experiences and are pleased that the majority in each group echoes the words of one of the teachers: "I appreciate all that you do for students who need the extra attention."

So thank you supporters! Again we cannot do what we do without you. You have come alongside of us in record numbers and we are ever grateful for your gifts. We are pleased to present this report on the 2010-2011 year so you will have confidence in your investments. However, as you read about our financial impact, we hope that you can look past the numbers to see your significant social investment in the faces and smiles of the children you have supported. We eagerly seek your support for the educational future of our community.

Blessings,

Barbara Dickerson, Ph.D.  
Executive Director

*"It's like school but you learn a little bit more."  
- Student*



*"It's a pleasure to have you provide this support system to students whose parents are not able to help them, especially limited English speakers"*

- Teacher

## Homework House

P.O. Box 993  
Azusa, Ca 91702

www.onhh.org  
(626) 969-7051

## Board of Directors

**Jan Wickersham**, President  
Retired Educator/Business Woman

**Tom Clark**, Treasurer  
Owner/Principal Insurance Agency

**Ginny Dadaian**, Secretary  
Community Relations Director  
Azusa Pacific University

**Bryan London**  
America's Christian Credit Union

**Stuart Aldridge**, Owner  
Select Services Search Firm

## Board of References

**Stephanie Deal**, CPA

**Susan Downs**, Retired Risk Manager

**Shelley Coolidge**, Professional Writer

**Samuel Martinez**, President,  
Azusa Ministerial Association

**Atisthan Roach**  
Vulcan Community Relations

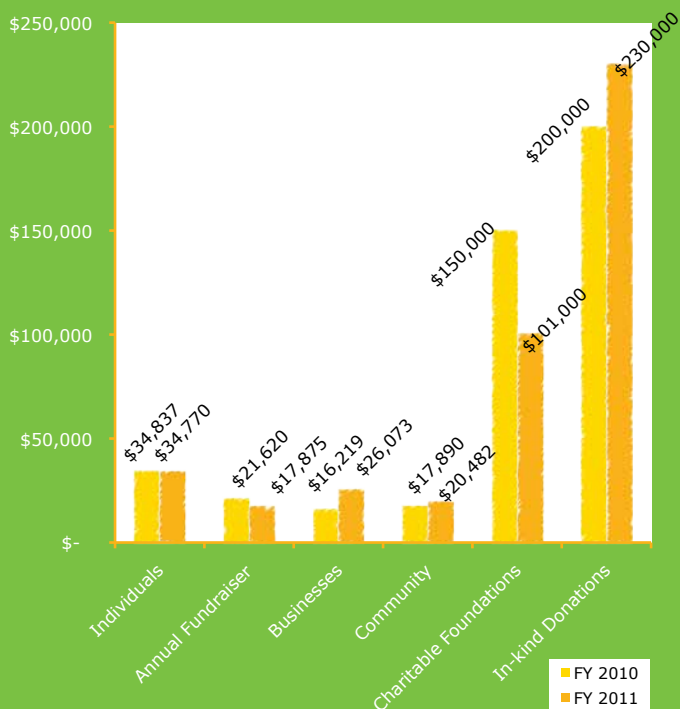
## PROGRAMS & EVENTS

- K-12 Tutoring for homework projects
- Garden Work Day
- Thanksgiving Food Distribution
- Azusa 101
- Clippers and Dodger Games
- ACCU Snow Day
- Parent Seminars
- Parent Committee Leadership Tooling
- Online ESL Training
- Alpine Camp Weekends
- Campus Crash
- Game Days
- Santa Fe Dam
- Partnerships with Library & Parks & Rec
- VBS Partnerships

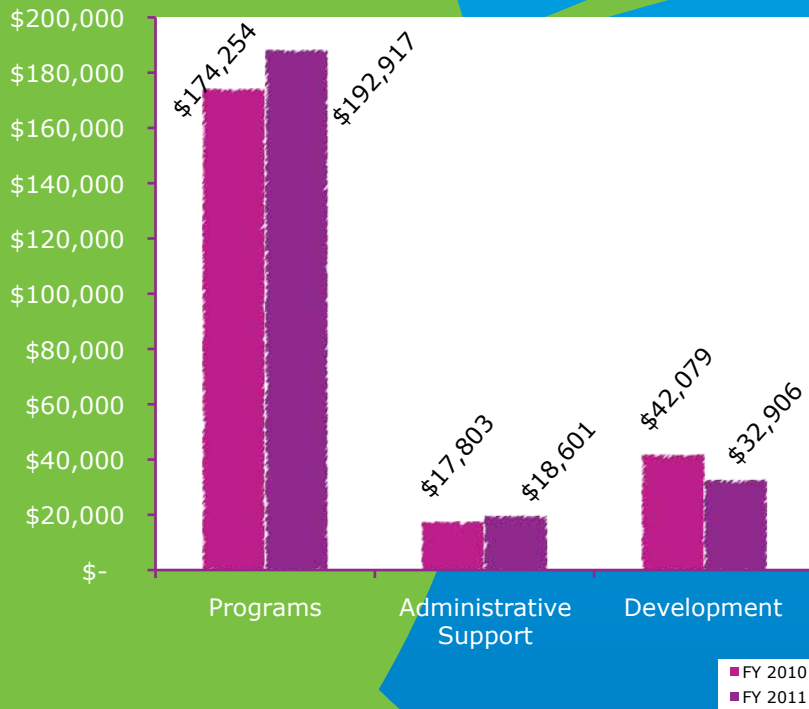


# 2010-2011 FINANCIAL REPORT

## INCOME



## EXPENSES



## INCOME

	2010	2011
Individuals	\$ 34,837	\$ 34,770
Annual Fundraiser	\$ 21,620	\$ 17,875
Businesses	\$ 16,219	\$ 26,073
Community	\$ 17,890	\$ 20,482
Charitable Foundations	\$ 150,000	\$ 101,000
In-kind Donations	\$ 200,000	\$ 230,000
<b>Total</b>	<b>\$ 440,566</b>	<b>\$ 430,200</b>

## REVENUE



## EXPENSES

	2010	2011
Programs	\$ 174,254	\$ 192,917
Administrative Support	\$ 17,803	\$ 18,601
Development	\$ 42,079	\$ 32,906
<b>Total</b>	<b>\$ 234,136</b>	<b>\$ 244,424</b>



"I actually focus a lot more in school which gives me a better advantage in getting good grades"

# THANK YOU

to our faithful supporters!

Your support has enriched the lives of our children & their families.

Please see our Web site for a complete list of supporters: [www.onhh.org](http://www.onhh.org)



"It's the best place to go when you need to do homework."  
- Student



"I am grateful for your help."  
- Teacher



"They worry about us and they are the best tutors in the world."  
- Student



"My child had an 'F' when he entered the program and now he does not have any 'F's'"  
- Parent

